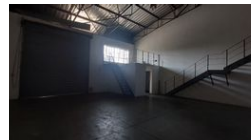
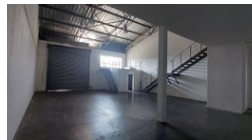


NEW





Web Ref CL651



R15,350 pm

Gross Monthly Rental R15,350 Excl. VAT

 0  0

Warehouse in Central Park industrial complex

Warehouse in Central Park industrial complex

Upmarket industrial warehouse with offices to let in Nelspruit

R 15 350.00 p/m
Pricing excludes VAT, water and electricity (prepaid)

Size 194m²
Roller door for access to warehouse
Warehouse
Kitchenette
Bathroom

Situated in Central Park Industrial complex in Nelspruit's Eastern Industrial area near the R40 with good road links and accessibility. This upmarket industrial complex is well appointed with link truck access, additional security and boundary walls.

To view this or other similar properties, please contact Jan de Vos at PDL Property Management your trusted leasing and investment sales specialist. Alternatively send an email and we will contact you.

Features

Zoning Industrial

Sizes
Floor Size 194m²